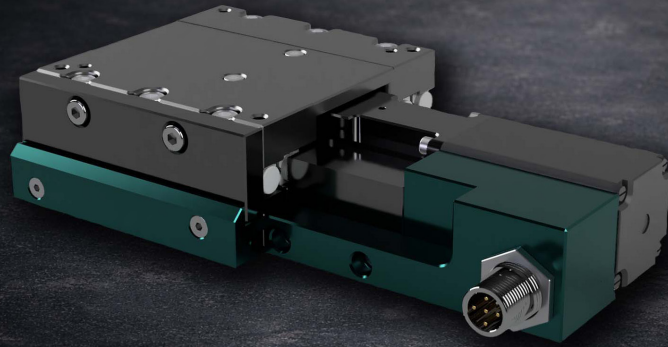


Linear Translation Stage

LAC - 20 - LIE

Typical applications

- Optical alignment systems
- Measurement and calibration setups
- Precision positioning applications



Product description

LAC-20-LIE is a compact linear translation stage for precise and controlled linear motion. It offers 20 mm travel, a rigid mechanical design and a ballscrew drive for stable and repeatable positioning.

The stage supports both incremental and absolute linear encoders.

Key features

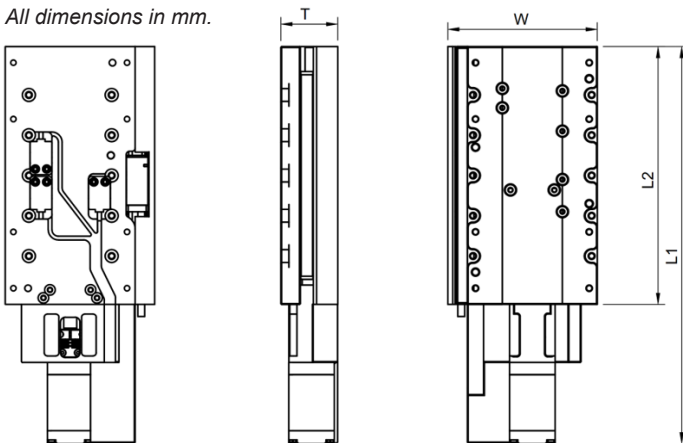
- Travel range: 20 mm
- Ballscrew-driven linear motion
- Bidirectional positioning with encoder feedback
- Minimum incremental movement: 0.2 μm
- Incremental linear encoder as standard
- Absolute linear encoder available as option
- Optical reference switch
- Stepper motor as standard, brushless DC motor optional

Technical specifications LAC-20-LIE

Dimensions	Unit	Value
L1	mm	166
L2	mm	80
W	mm	92
T	mm	35

Specifications	Unit	Value
Travel	mm	20
Ballscrew Lead	mm	2
Thrust	N	120
Vertical load (on platform)	N	120
Perpendicular load	N	80

All dimensions in mm.



Positioning	Unit	Value
Bidirectional with encoder	μm	Encoder resolution
Minimum incremental movement	μm	0.2

Accuracy	Unit	Value
Pitch	μrad	100
Yaw	μrad	100

Encoder	Unit	Value
Incremental linear		X
Absolute linear		option
Resolution	μm	0.5, 0.2, 0.1
Reference switch		optical

Motor	Unit	Value
Type		Stepper brushless DC optional

Stepper motor specifications	Unit	Value
Nema		11
Current per winding	A	1.4
Inductance	mH	1.8
Resistance	Ohm	2.3
Resolution	deg/full step	1.8

Specifications are subject to change without notice.

Interested in this product?
Contact us for drawings,
datasheets or custom adaptations.

www.heftytec.com
info@heftytec.com
Document version: v1.0 – 2026

